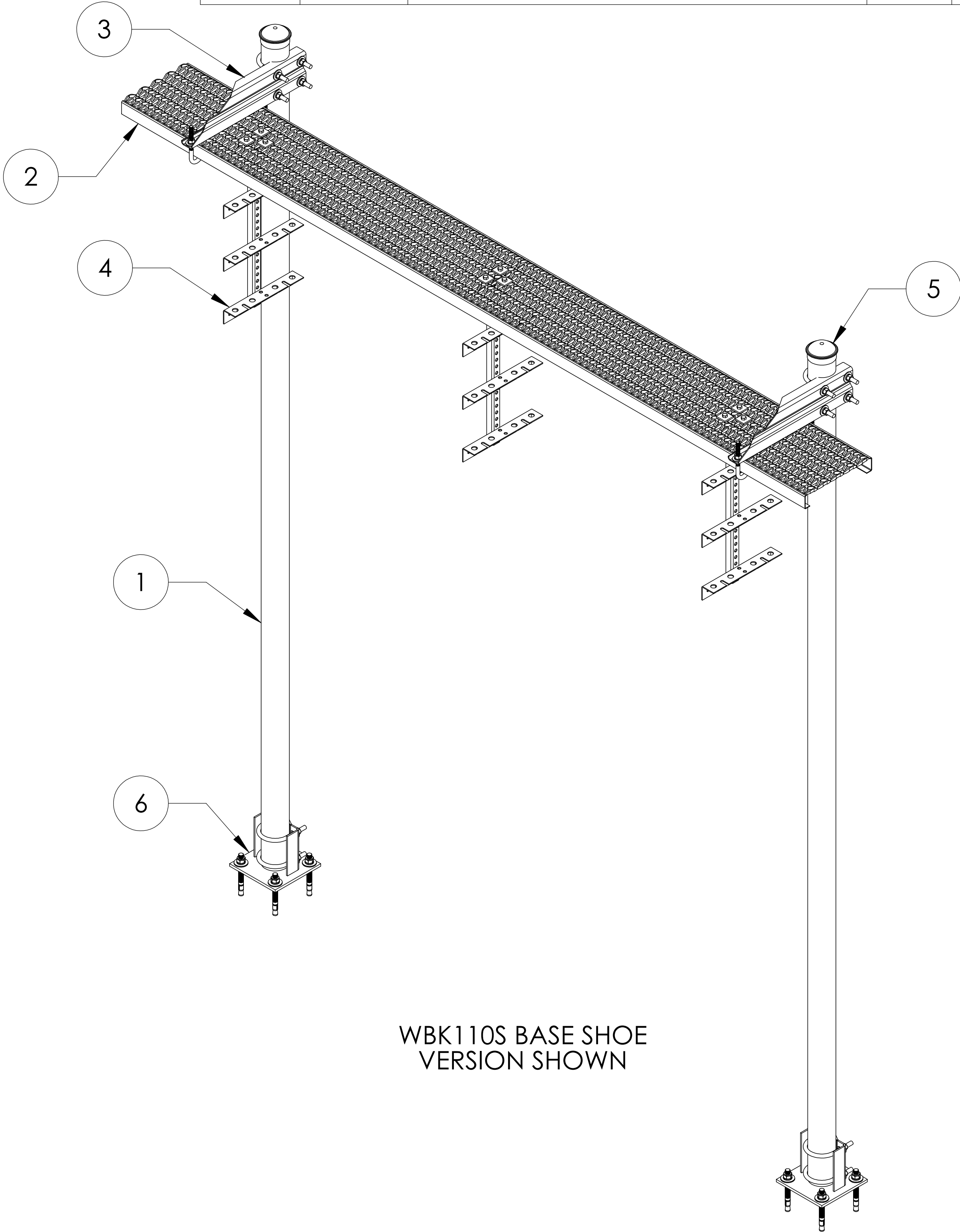
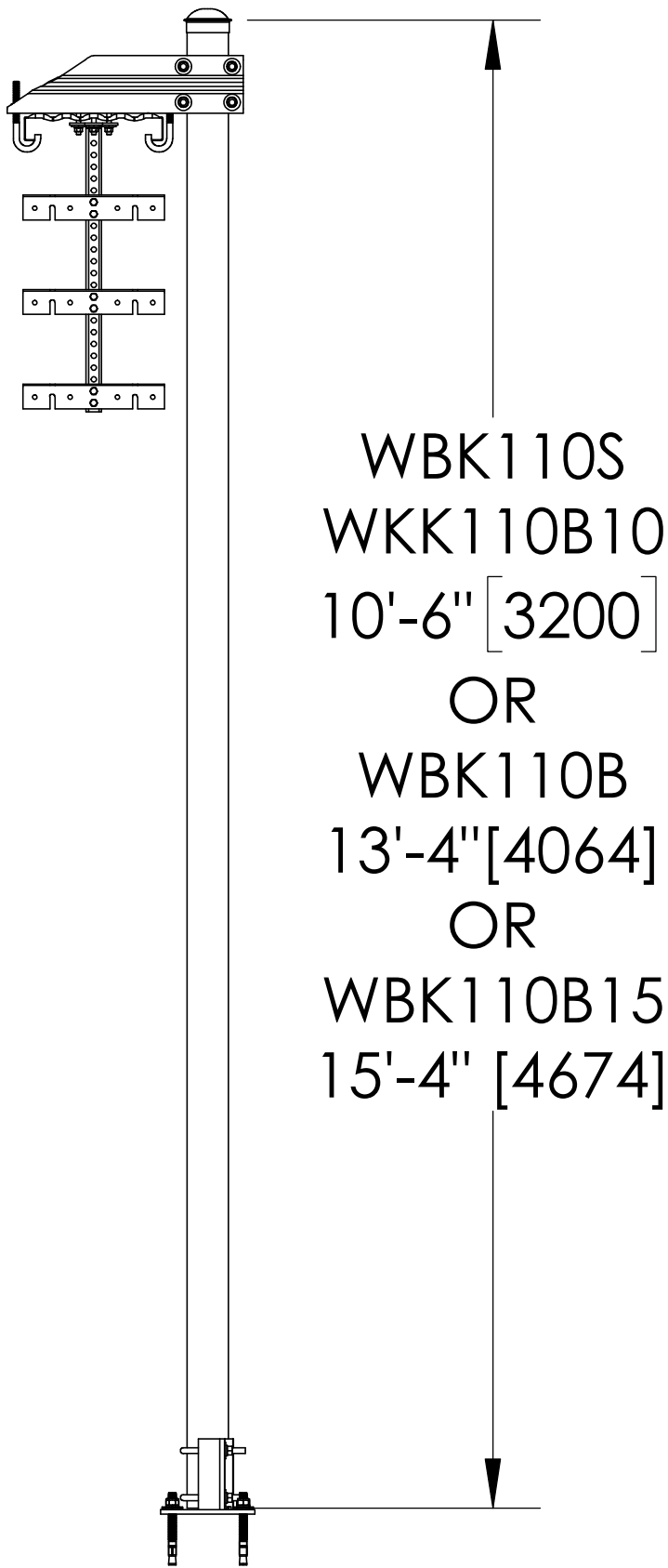
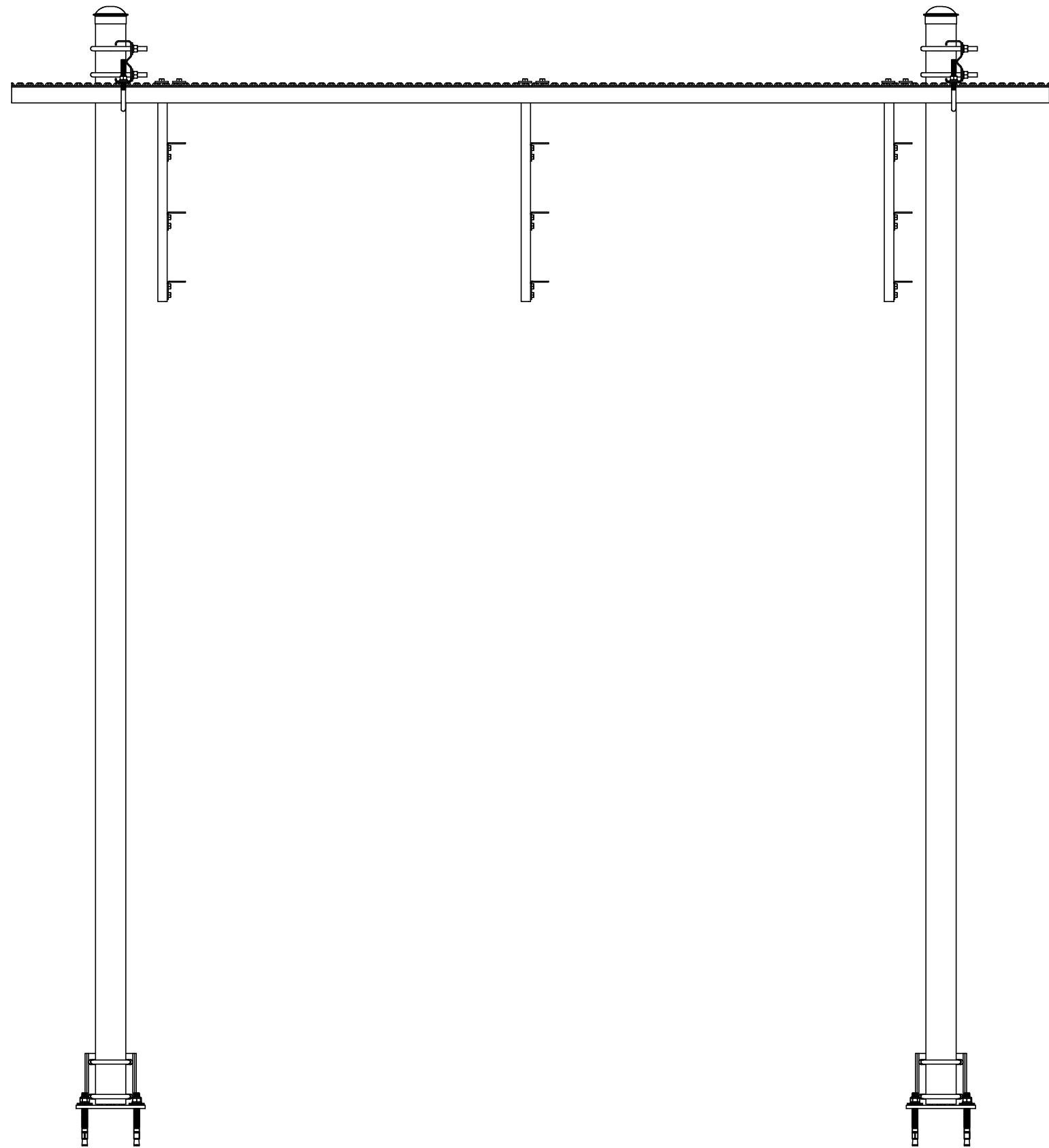
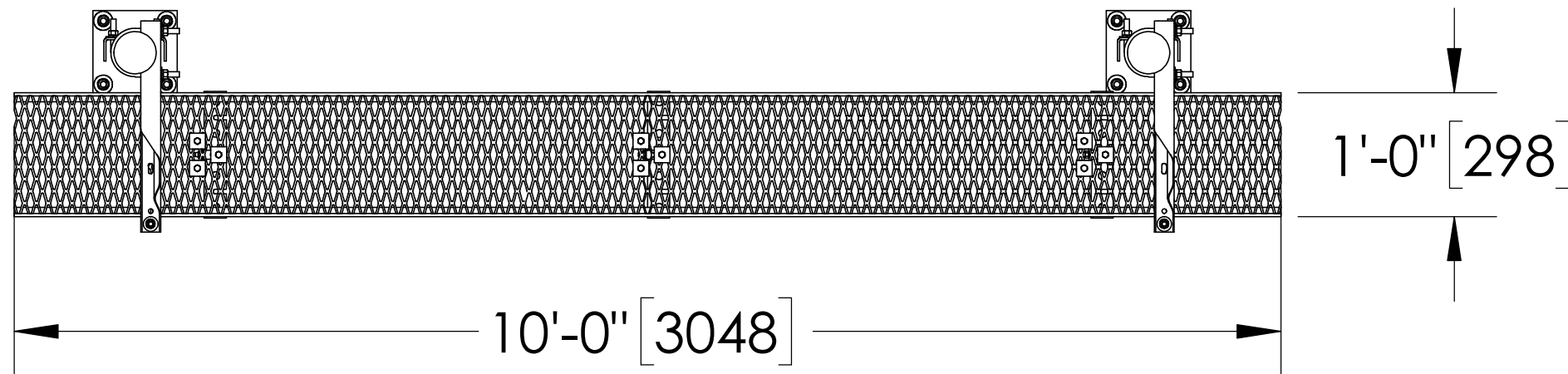


8		7	6				5	
ITEM	PART NO.	DESCRIPTION	FM-WBK110BHK	FM-WBK110S	FM-WBK110B10	FM-WBK110B	FM-WBK110B15	WEIGHT
1	MT547126	Ø 3.5" O.D. X 10'6" (126") STRUCTURAL TUBE	-	2	2	-	-	61.93 LBS
1	MF130	Ø 3.5" O.D. X 13'-4" (160") STRUCTURAL TUBE	-	-	-	2	-	61.0 LBS
1	MF273	Ø 3.5" O.D. X 15'-4" (184") STRUCTURAL TUBE	-	-	-	-	2	116.58 LBS
2	WBCY110	SAFETY GRATING 12" X 10'	-	1	1	1	1	70 LBS
3	WBLB123	12" WAVEGUIDE BRIDGE KIT	2	2	2	2	2	7.66 LBS
4	WBT123	TRAPEZE KIT, 12"	3	3	3	3	3	8.39 LBS
5	PC034	Ø 3-1/2" O.D. PIPE CAP	2	2	2	2	2	0.74 LBS
6	WBBS2	BASE SHOE FOR Ø 3-1/2" O.D. PIPE	-	2	-	-	-	14.18 LBS

REVISIONS				
REV.	ZONE	DESCRIPTION	BY	DATE
A		INITIAL RELEASE	ACG	03/11/22
B		ADD 2 KITS	ACG	05/23/22
C		ADD WBK110BHK	ACG	07/25/22
D		REMOVE WBBS FROM WBK110BHK	ACG	08/23/22
E		REPLACE WBBS WITH WBBS2	ACG	05/23/24



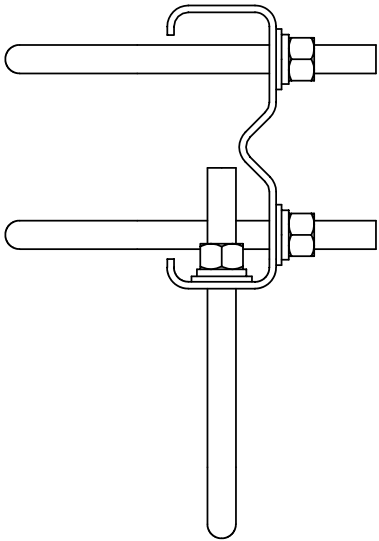
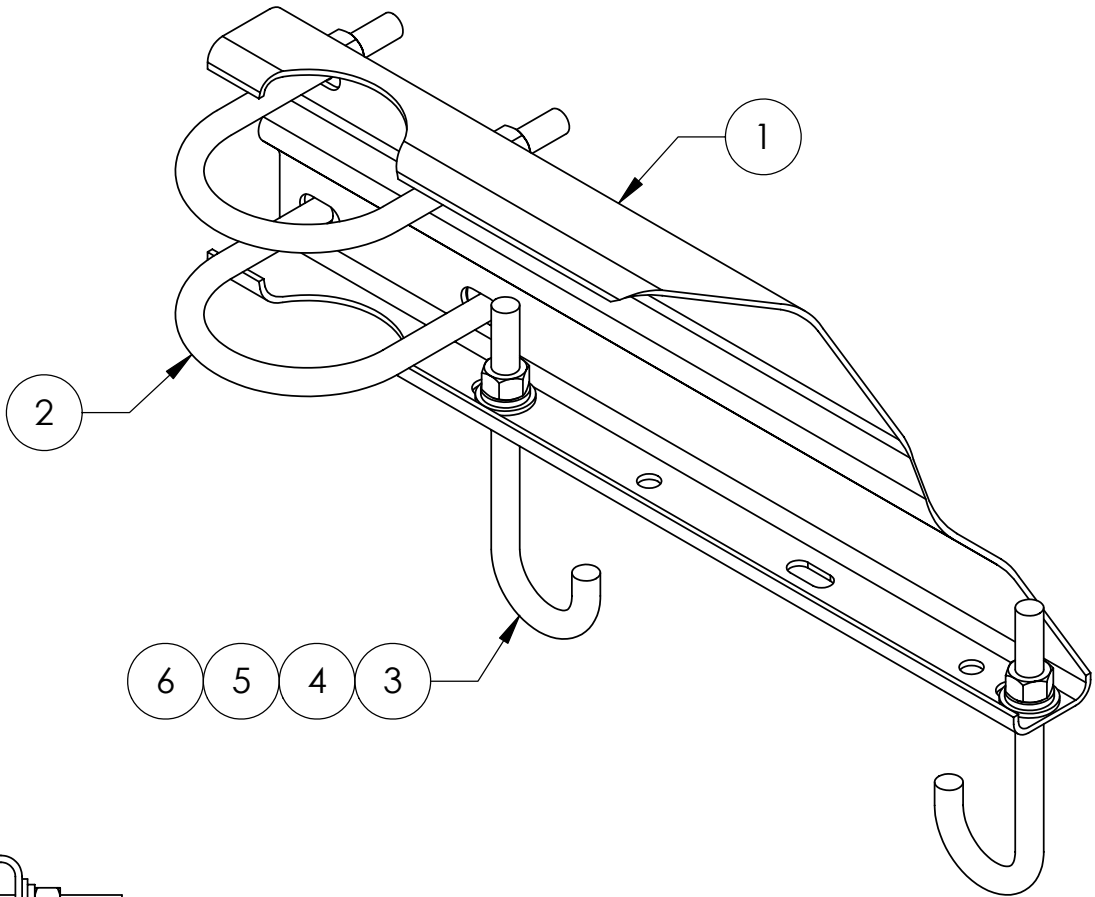
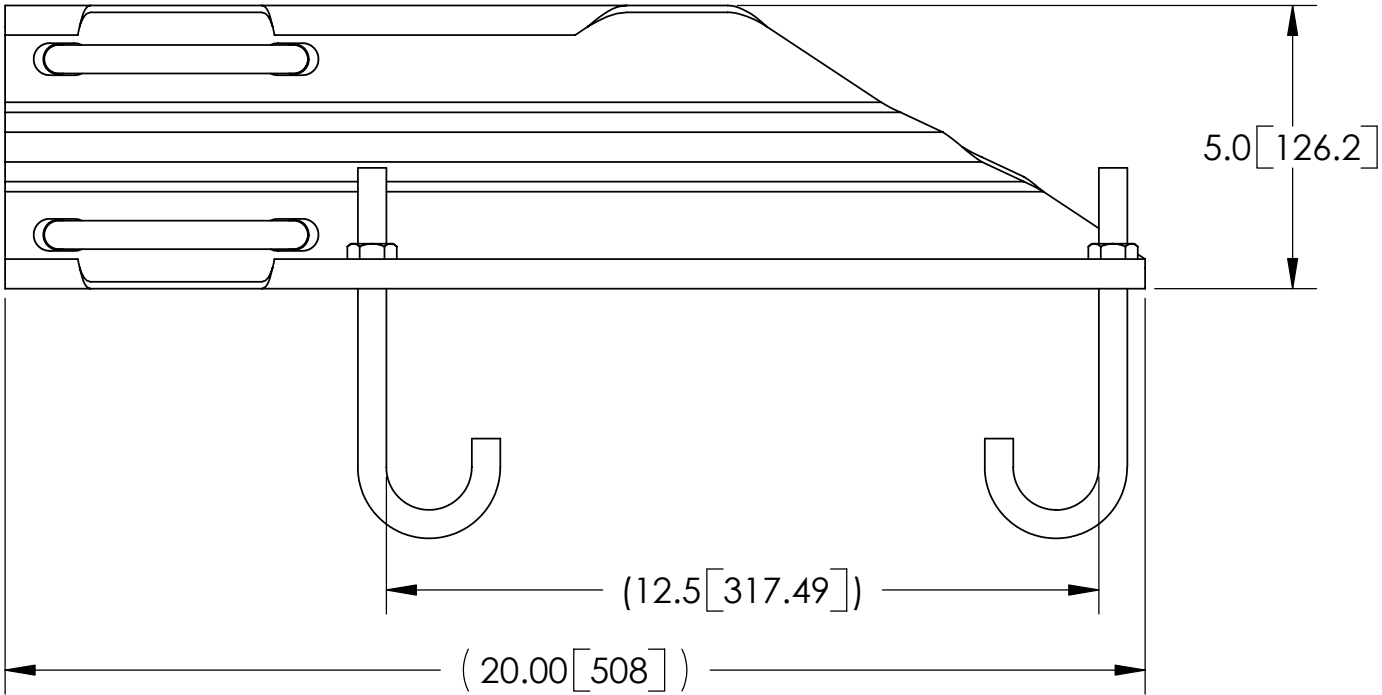
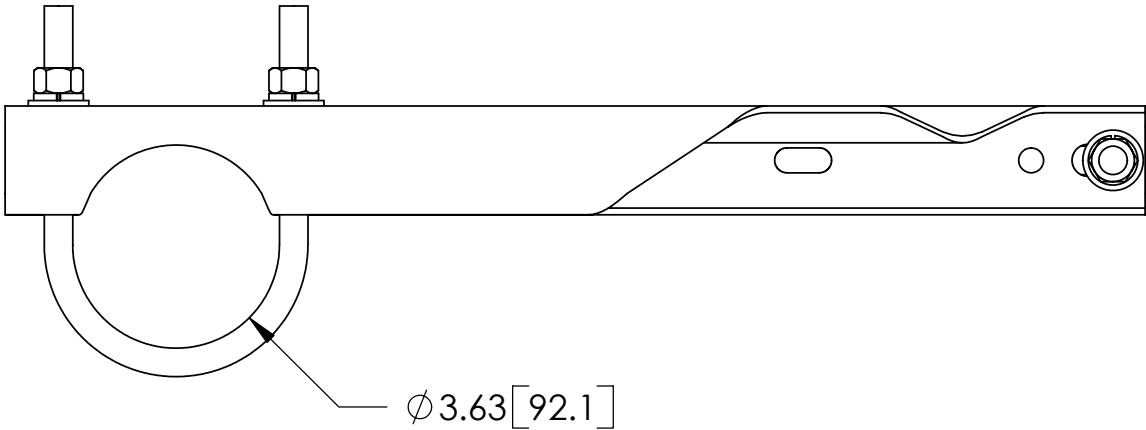
WBK110S BASE SHOE
VERSION SHOWN

NOTES:
1. ALL METRIC DIMENSIONS ARE IN BRACKETS.

These drawings and specifications are the proprietary property and may be used only for the specific purpose authorized in writing. ALL DIMENSIONS ARE IN INCHES U.O.S. TOLERANCES UNLESS OTHERWISE SPECIFIED: .X = ± .06 ANGLES ±2' .XX = ± .03 FRACTIONS ±1/32 .XXX = ± .010 REMOVE BURRS AND BREAK EDGES .005 DO NOT SCALE THIS PRINT	DRAWN BY: ACG	SHEET: 1 of 1	PART NUMBER: FM-WBK110 Series
	CHECKED BY: MKV	SCALE: NTS	DESCRIPTION: 12" X 10' WAVEGUIDE BRIDGE KIT (BURIAL PIPE OR BASE SHOE)
	DATE: 03/11/22	MATERIAL: ASTM A36, A53, A568	DRAWING TYPE: ASSEMBLY DRAWING
	REVISION: E	FINISH: ASTM A123 WEIGHT 263.78 LBS	

ITEM	PART NO.	DESCRIPTION	QTY.	WEIGHT
1	WBLB123.07	12" WAVEGUIDE BRIDGE SUPPORT BRACKET	1	4.71 LBS
2	GUB-4356	1/2" X 3-5/8" X 6" GALV U-BOLT KIT	2	0.83 LBS
3	WB-JB-6	1/2" J-BOLT	2	0.50 LBS
4	GWF-04	1/2" GALV FLAT WASHER	2	0.01 LBS
5	GWL-04	1/2" GALV LOCK WASHER	2	0.00 LBS
6	GN-04	1/2" GALV HEX NUT	2	0.01 LBS

REVISIONS				
REV.	ZONE	DESCRIPTION	BY	DATE
D		NEW DESIGN	DI	03/08/05
E		REPLACE WBLB12306 WITH WBLB12307	ACG	08/28/07

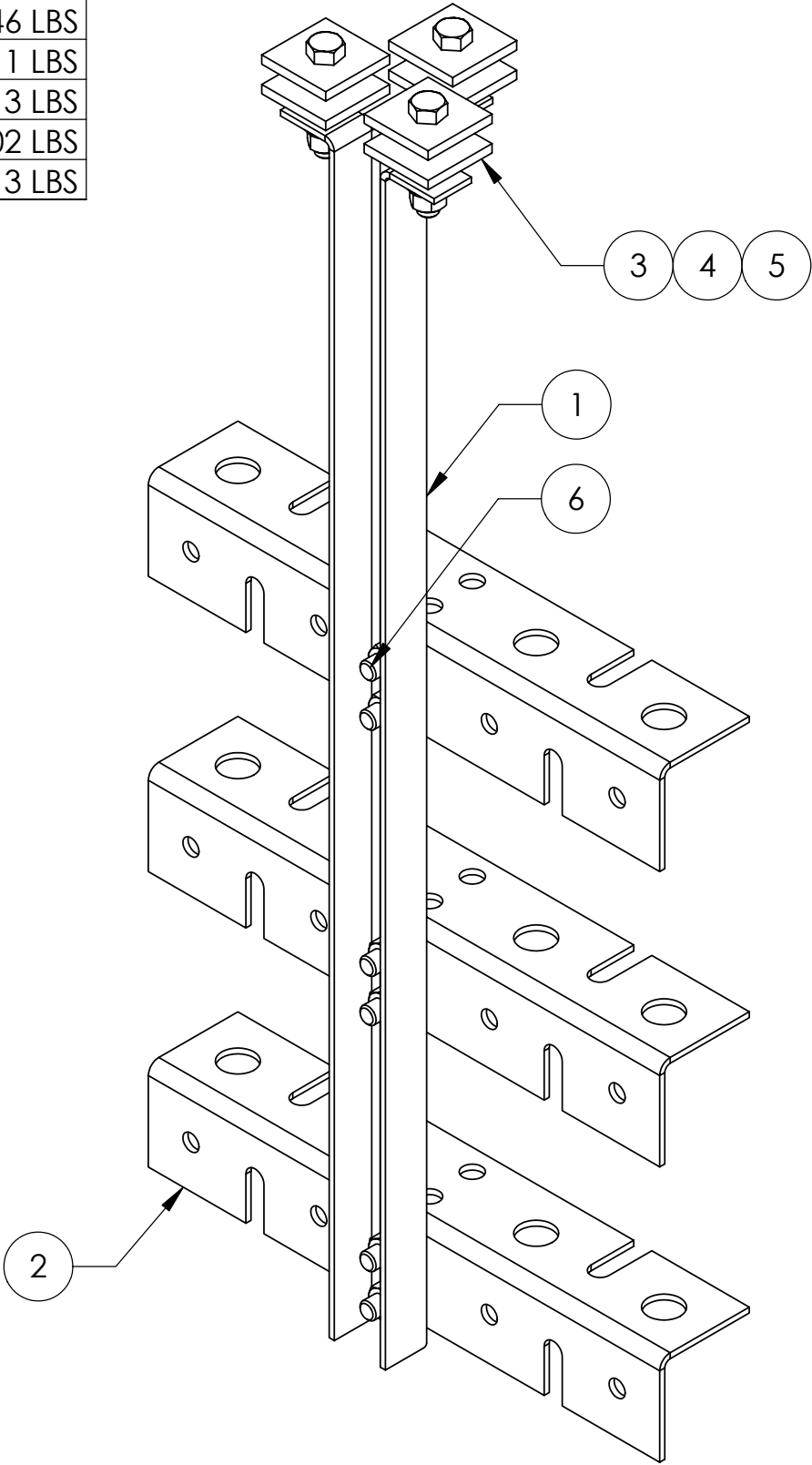


NOTES:
1. ALL METRIC DIMENSIONS ARE IN BRACKETS.

These drawings and specifications are proprietary property of manufacturer and may be used only for the specific purpose authorized in writing. ALL DIMENSIONS ARE IN INCHES U.O.S. TOLERANCES UNLESS OTHERWISE SPECIFIED: .X = ± .06 ANGLES ±2' .XX = ± .03 FRACTIONS ±1/32 .XXX= ± .010 REMOVE BURRS AND BREAK EDGES .005 DO NOT SCALE THIS PRINT	DRAWN BY: DI	SHEET: 2 of 4	PART NUMBER: FM-WBLB123
	CHECKED BY: TP	SCALE: NTS	DESCRIPTION: 12" WAVEGUIDE BRIDGE SUPPORT BRACKET KIT
	DATE: 3/8/05	MATERIAL: A36	DRAWING TYPE: ASSEMBLY DRAWING
	REVISION: E	FINISH: GALV A123 WEIGHT: 7.81 LBS	

ITEM	PART NO.	DESCRIPTION	QTY.	WEIGHT
1	WBT243.01	VERTICAL TRAPEZE SECTION	1	2.55 LBS
2	WBT123.02	12" HORIZONTAL TRAPEZE SECTION	3	1.46 LBS
3	MT-387	SQUARE WASHER, 1½" X 1½" W/ 7/16" HOLE	6	0.11 LBS
4	GB-03205	3/8" X 2" GALV BOLT KIT	3	0.13 LBS
5	GWF-03	3/8" GALV FLAT WASHER	3	0.02 LBS
6	GB-03105	3/8" X 1" GALV BOLT KIT	6	0.13 LBS

REVISIONS				
REV.	ZONE	DESCRIPTION	BY	DATE
D		REVISED	DI	1/26/05




These drawings and specifications are proprietary property of manufacturer and may be used only for the specific purpose authorized in writing.

ALL DIMENSIONS ARE IN INCHES U.O.S.
TOLERANCES UNLESS OTHERWISE SPECIFIED:

.X	=	.06	ANGLES	2°
.XX	=	.03	FRACTIONS	1/32
.XXX	=	.010		

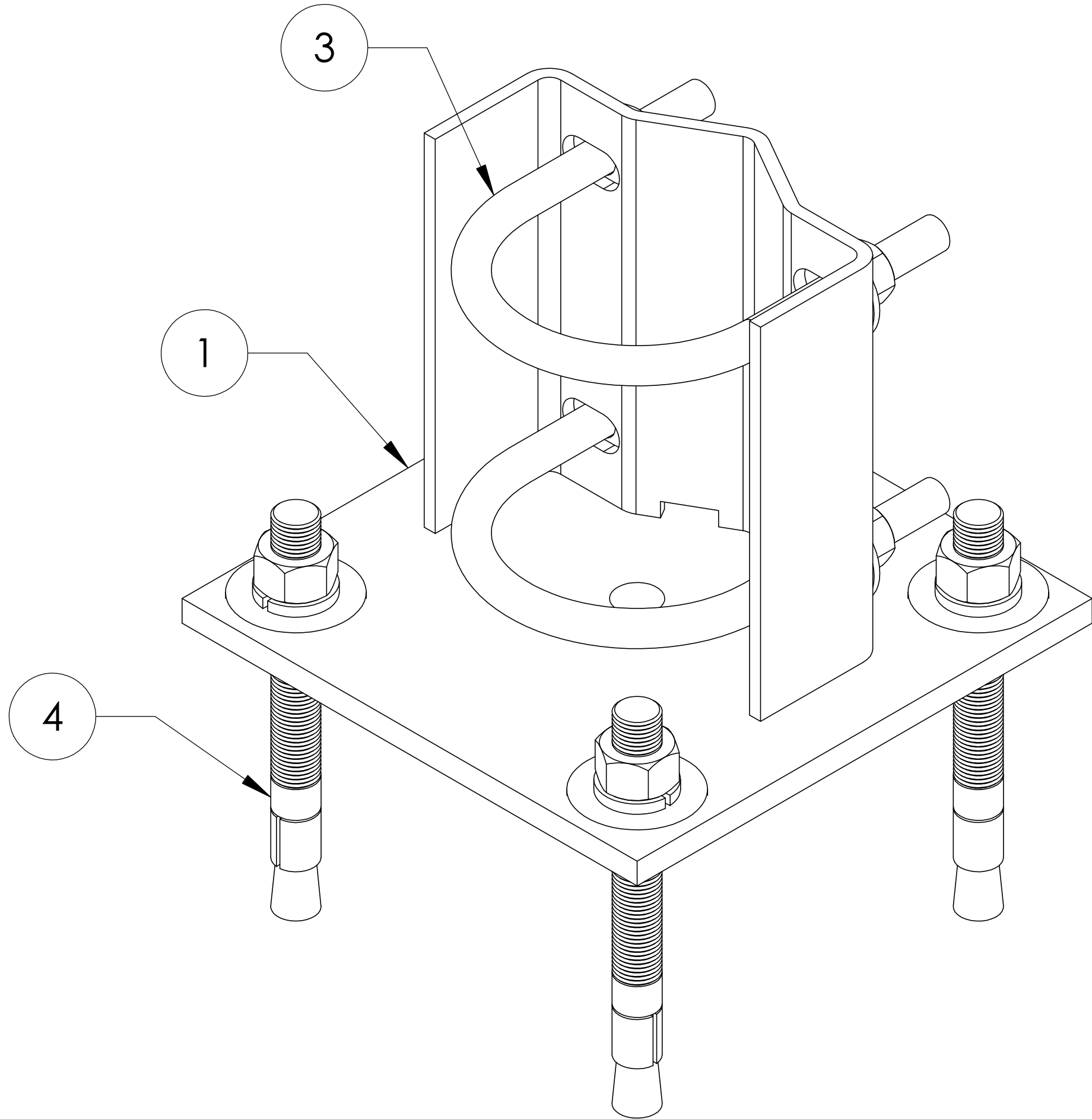
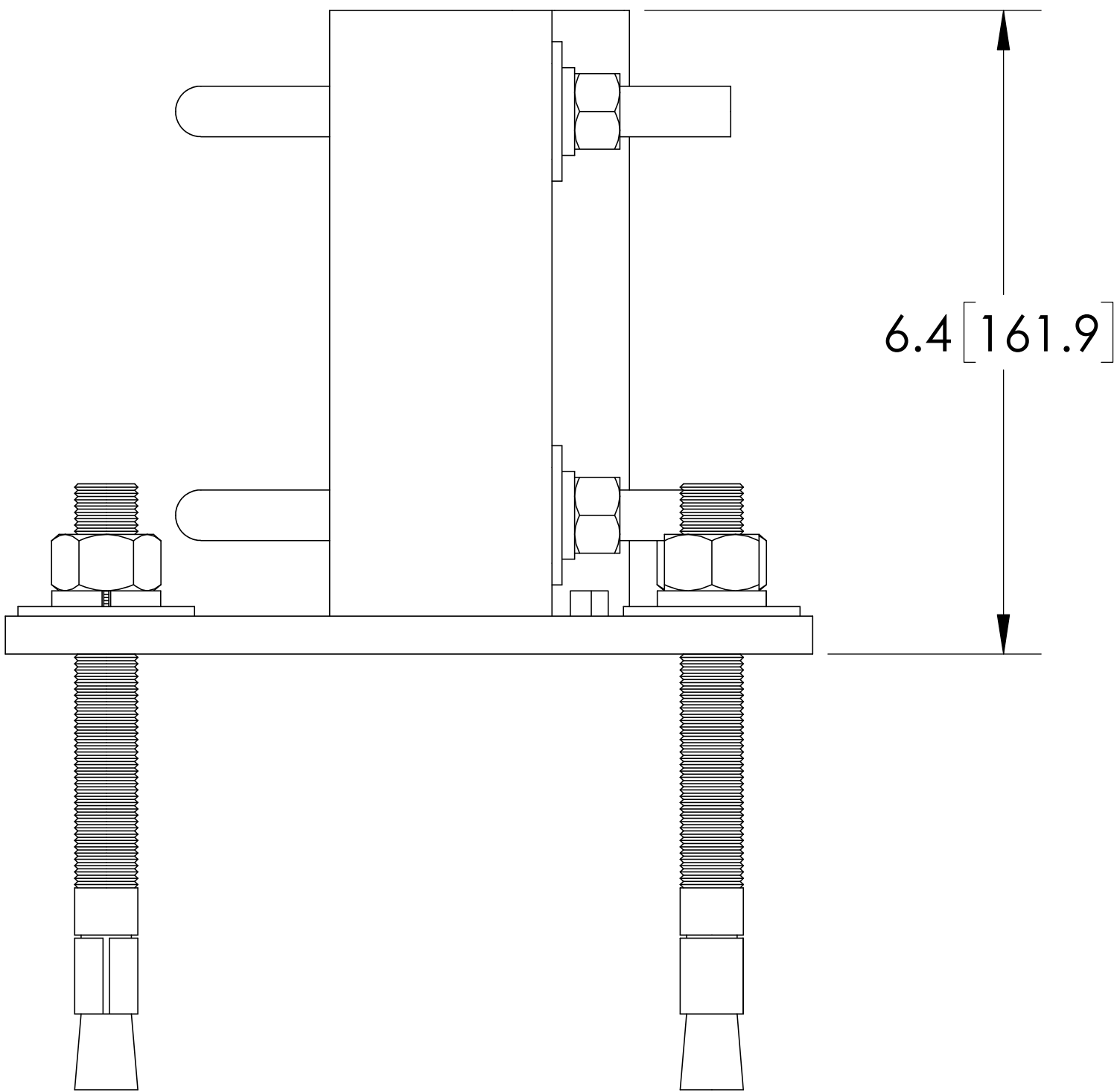
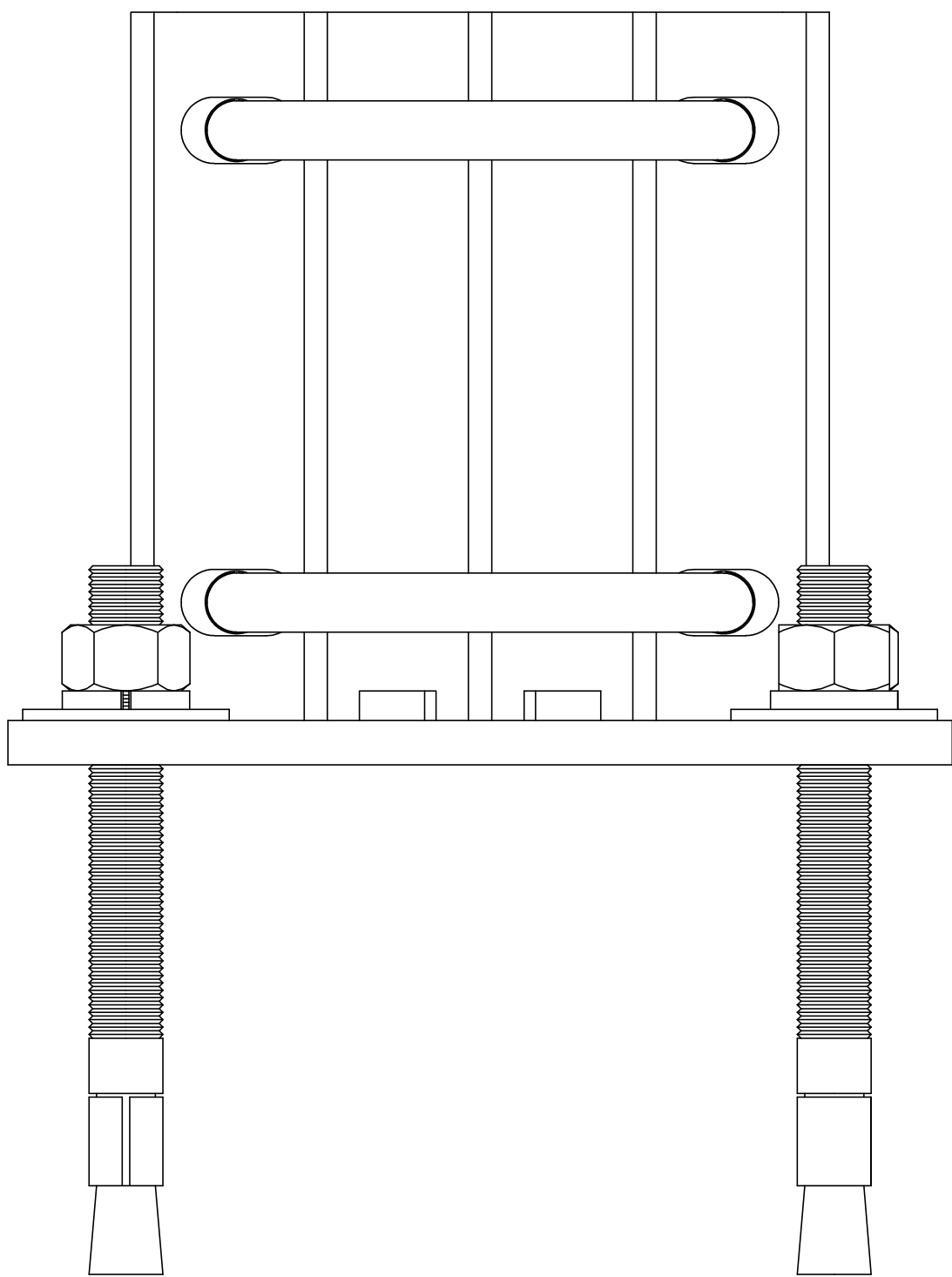
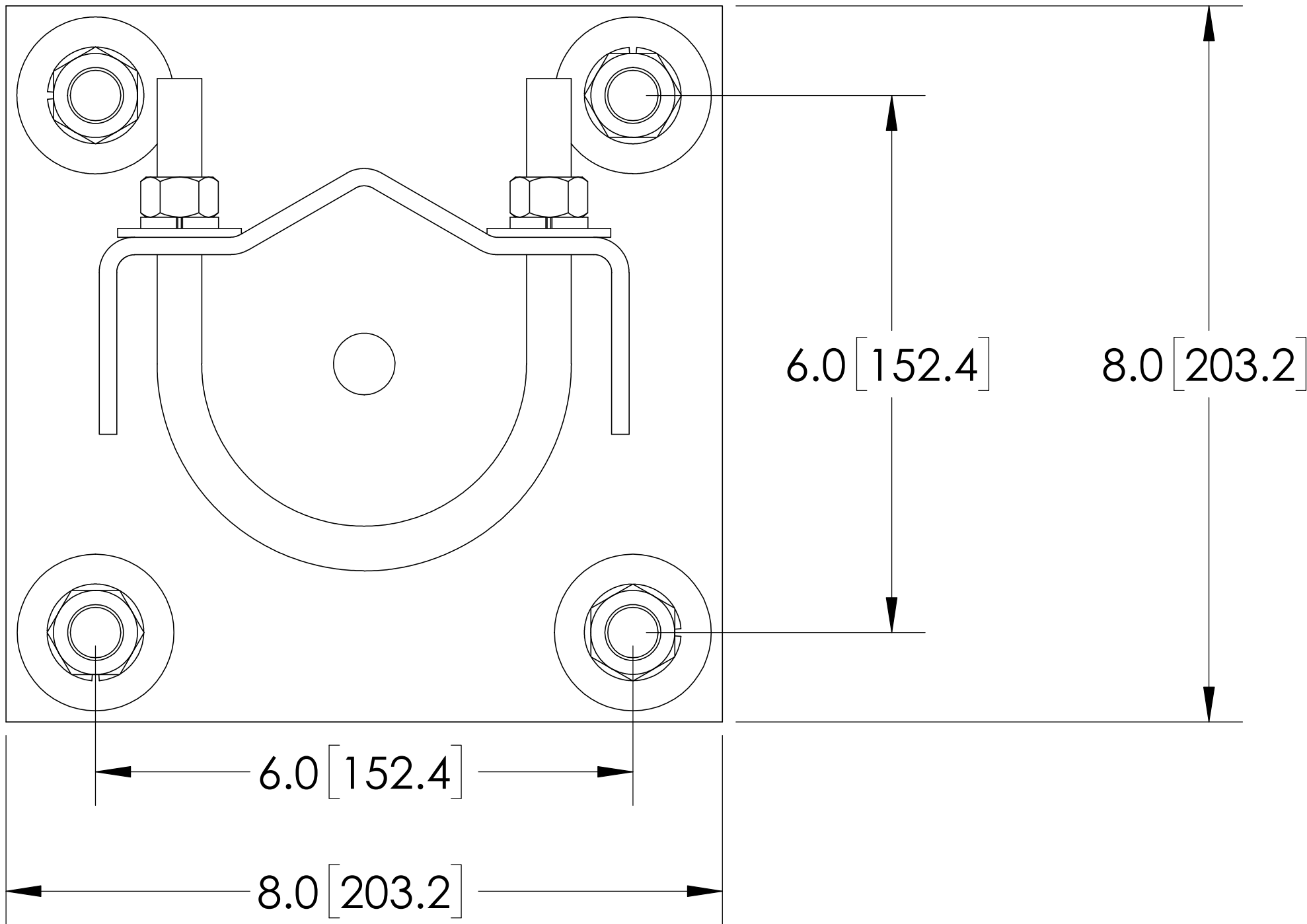
REMOVE BURRS AND BREAK EDGES .005

DO NOT SCALE THIS PRINT


DRAWN BY: DI	SHEET: 3 of 4	PART NUMBER: FM-WBT123
CHECKED BY: TP	SCALE: NTS	DESCRIPTION: TRAPEZE KIT
DATE: 01/27/05	MATERIAL: A36	DRAWING TYPE: ASSEMBLY DRAWING
REVISION: D	FINISH: GALV A123	
	WEIGHT: 8.43 LBS	

ITEM	PART NO.	DESCRIPTION	QTY.	WEIGHT
1	WBBS2.01	FOOT WELDMENT	1	9.81 LBS
2	WBBSH	HARDWARE KIT (ITEM# 3 & 4)	1	
3	GUB4355	1/2"-13 UNC X 3-5/8" X 5" GALV U-BOLT KIT	2	0.72 LBS
4	MT280	5/8" X 6" WEDGE ANCHOR KIT	4	0.64 LBS

REVISIONS				
REV.	ZONE	DESCRIPTION	BY	DATE
A		INITIAL RELEASE	ACG	10/18/13



NOTES:
1. ALL METRIC DIMENSIONS ARE IN BRACKETS.
2. STAMP PART IDENTIFICATION NUMBER.
3. WELDING WORKMANSHIP PER AWS D1.1, TABLE 6.1.

These drawings and specifications are proprietary property and may be used only for the specific purpose authorized in writing.		DRAWN BY: ACG	SHEET: 1 of 1	PART NUMBER: FM-WBBS2
ALL DIMENSIONS ARE IN INCHES U.O.S. TOLERANCES UNLESS OTHERWISE SPECIFIED: .X = ± .06 ANGLES ±2* .XX = ± .03 FRACTIONS ±1/32 .XXX= ± .010 REMOVE BURRS AND BREAK EDGES .005 DO NOT SCALE THIS PRINT		CHECKED BY: MKV	SCALE: NTS	DESCRIPTION: BASE SHOE FOR Ø 3-1/2" O.D. PIPE
		DATE: 10/20/21	MATERIAL: ASTM A1011/A1018 Gr.36	DRAWING TYPE: ASSEMBLY DRAWING
		REVISION: A	FINISH: ASTM A123	
	WEIGHT 14.18 LBS			